

Color Trend Magazine

TALK TO ME IN COLOR

2023



- 01 NOSTALGIA
- 02 EMPATHY
- 03 CALMNESS
- 04 FEEL
- 05 BALANCE
- 06 SENSE



ΚΑΙΝΟΤΟΜΙΑ ΠΟΥ ΔΙΝΕΙ ΑΞΙΑ

TALK TO ME IN COLOR

For more inspiration follow us:

kraftpaints.com

[@kraftpaintsgreece](https://www.instagram.com/kraftpaintsgreece)

TALK TO ME IN COLOR

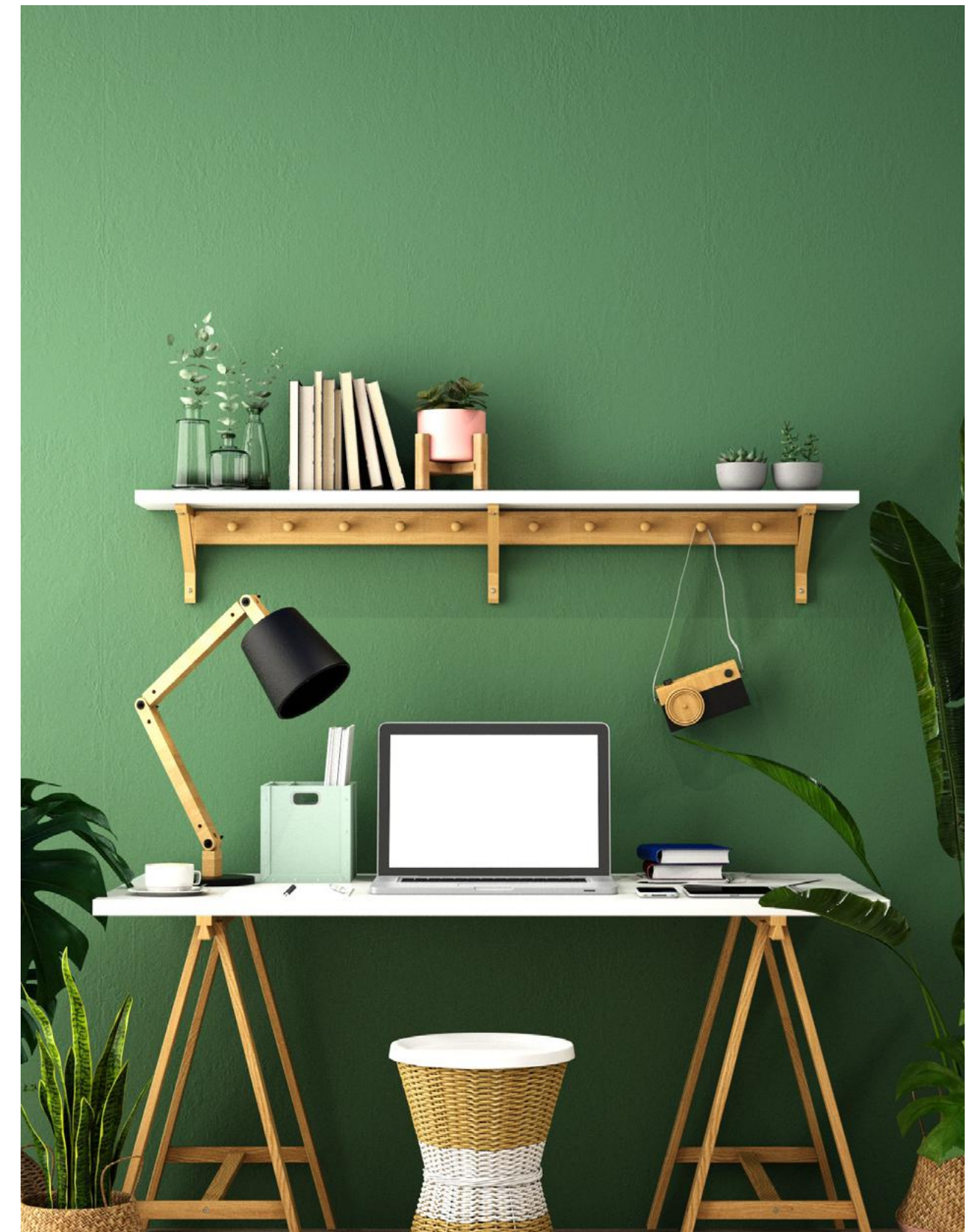
This year's trend book, entitled, *Talk to me in Color*, includes a number of themes that focus, in one way or another, on the question of mental wellbeing and the way we communicate through the creation of our personal space, our home. How we see and feel about ourselves is not only influenced by our age, but also by so many other factors and facets of our lives.

Our homes are at their most soulful and satisfying when they can successfully reflect back to us something core about our sense of self. Through the design process of our homes, many of us are trying to replicate, reject, or rework spaces from our past in an attempt to understand who we really are and create an emotional sanctuary. Setting aside the idealized images of what the perfect home ought to look like, we can instead think about how the personal space we design will manage to perfectly meet our needs. One of the most effective ways to achieve a consistent design that communicates our mood is an appropriate color scheme. Look for hues that help you feel peaceful, comfortable and content. It doesn't matter if it's a neutral hue or an eye-catching statement - choose colors that you like and work well with each other. Creating an environment that is reflected by your individual design preferences is a process that will take time and perseverance. That's why we've created a dedicated color pallet with 24 colors divided in 6 themes to help you find the one that reflects your mood.



- NOSTALGIA** if you want your space to create happy memories and feel nostalgic, we recommend the use of pink and bordeaux.
- EMPATHY** The addition of orange, pink and blue is ideal to create an empathetic space that is welcoming and reassuring, and that promotes intimate conversations.
- CALMNESS** In order to make a home a stress-free refuge, this theme suggests taking advantage of the calming, healing powers of blue and gray.
- FEEL** The ideal palette for those who want to use green to feel closer to nature.
- BALANCE** Earthy brown and yellow can make your home seem more balanced and down-to-earth, creating, in this way, a more welcoming atmosphere.
- SENSE** For a more holistic design approach that satisfies our 5 basic senses, incorporate green and purple into your space.

The colors depicted may vary with the physical colors due to the printing method. We recommend visiting your nearest paint shop and sampling the desired tint on the painted surface as you will have the exact fidelity of the tint in your favorite space.



01	NOSTALGIA	06
02	EMPATHY	14
03	CALMNESS	22
04	FEEL	30
05	BALANCE	38
06	SENSE	46

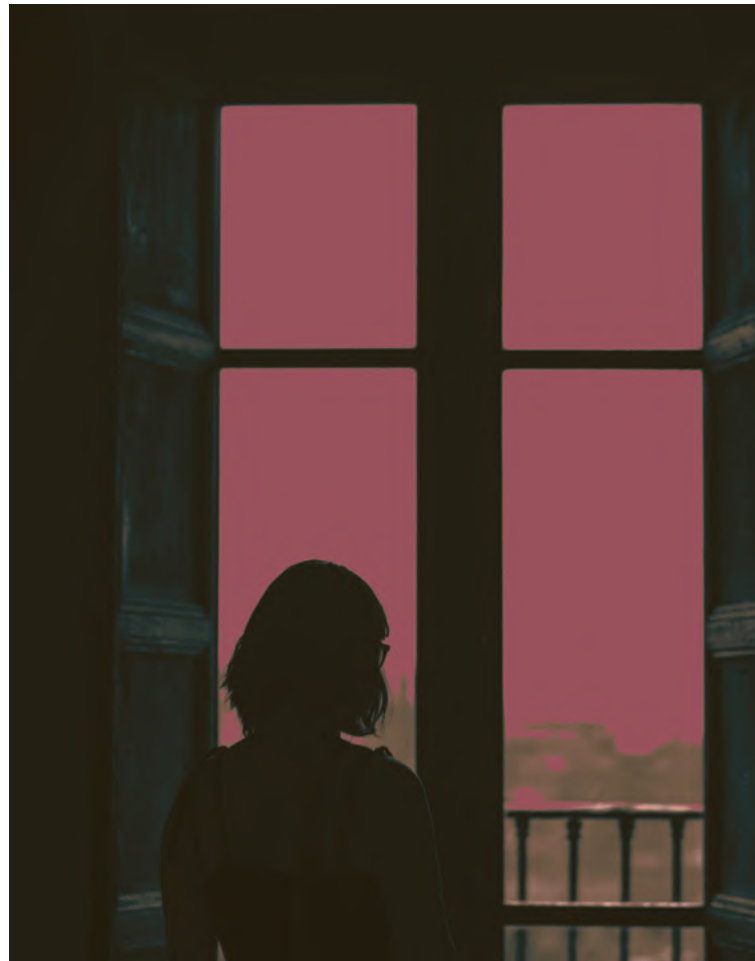
Nostalgia



In recent years, a sense of nostalgia has permeated many aspects of our lives. It can evoke positive emotions and lift our spirits at a difficult time. Today, our need for more intimate spaces with happy memories and a strong sense of security is more important than ever, which is why we see many trends making a strong comeback and adapting to modern aesthetics.



● No Regrets CM003



● Come Close CM004

If you are yearning for traditional decor and want to feel nostalgic, then shades of pink and bordeaux are ideal options.

As well as nostalgia, this theme promotes calmness, security and confidence, and represents emotions such as romance, purity and compassion. It is also associated with hope and the carefree days of childhood. The warm shades of pink and bordeaux are both nostalgic and modern, which is why they can be used in different styles and spaces. Pastel shades of pink such as **CM001 Our Daydream** are an ideal solution for all dreamers. These shades enhance creativity and help express feelings, and maintain emotional balance. In spaces like the living room where you spend a lot of time with family, relaxing and welcoming guests, we can easily imagine a bordeaux like **CM004 Come Close** decorating the walls. This color evokes pleasing feelings of warmth and hospitality, and encourages communication and collaboration. It is also the perfect way to add vintage character to your space.

COLOR
NAME

Our Daydream

CODE
CM001

COLOR
NAME

Sense of Time

CODE
CM002

COLOR
NAME

No Regrets

CODE
CM003

COLOR
NAME

Come Close

CODE
CM004

COLOR
NAME

First Touch

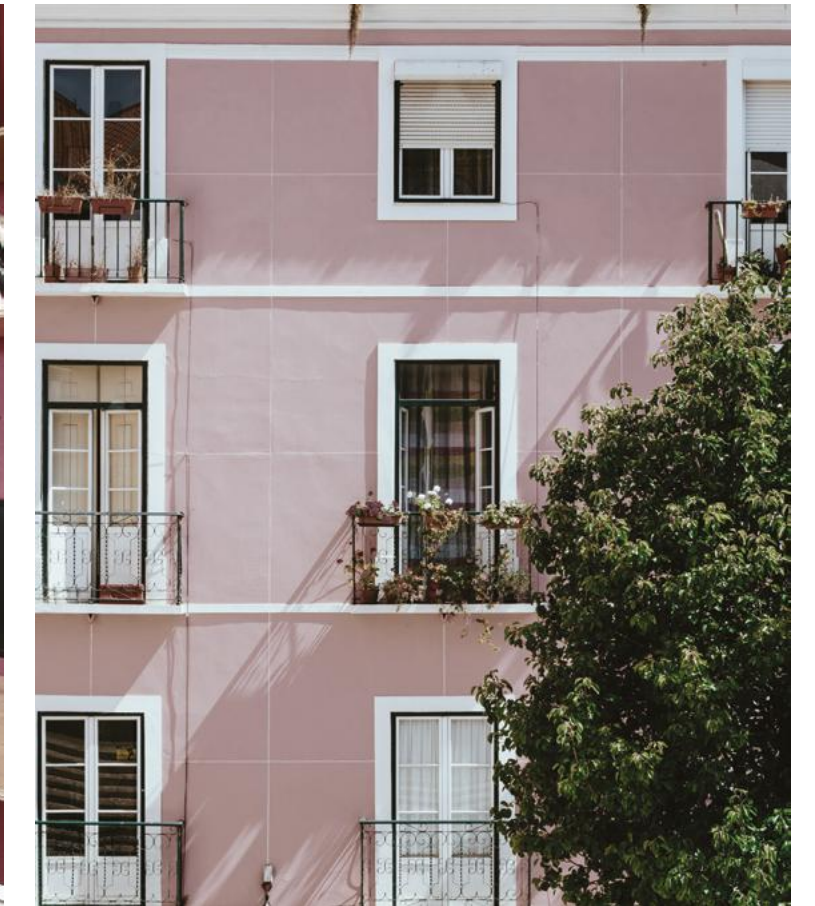
CODE
CM005

Inspiration



● First Touch CM005

● Come Close CM004



● Our Daydream CM001

The monochromatic combination of pink and bordeaux is very sweet, creating an atmosphere of elegance. Try dusty pink and powder pink for a cooler effect and feel free to add white or gray accents.

Other shades with which bordeaux can be combined are dark blue, conveying excitement, yellow, creating a friendly ambience, and white for a more modern effect. Pink, on the other hand, when combined with other pastel shades such as mint green, butter yellow and lilac, will make a room feel more spacious and light. If you want to give your space touches of Scandinavian design, combining it with gray and black accents will elevate it.



Design Trend

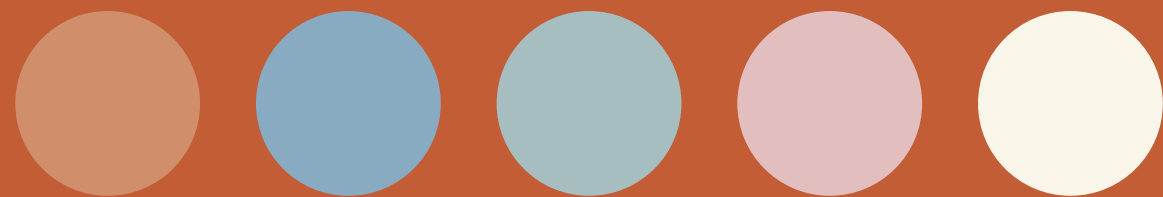


● Sense of Time CM002

For the ultimate nostalgia look, use contemporary touches of pink and bordeaux to bring vintage and second-hand furniture back to life. The key idea is that new trends and elements from the past coexist in the modern home, combining comfort with style and a sense of nostalgia. Therefore, statement vintage pieces "married" with minimalist furniture will give authenticity to your home.

In addition to the aesthetic effect, by repurposing furniture you will reduce your environmental footprint. Because of the poor quality plastic-based materials with which fast furniture is made, it is usually too expensive or difficult to repair, reuse or recycle. Instead, in most cases, vintage furniture costs less, is of superior quality, and allows you to express your personal style, thus adding character and uniqueness to a room. Varnishes can help you restore wood and metal surfaces and then paint them in any color that suits your space.

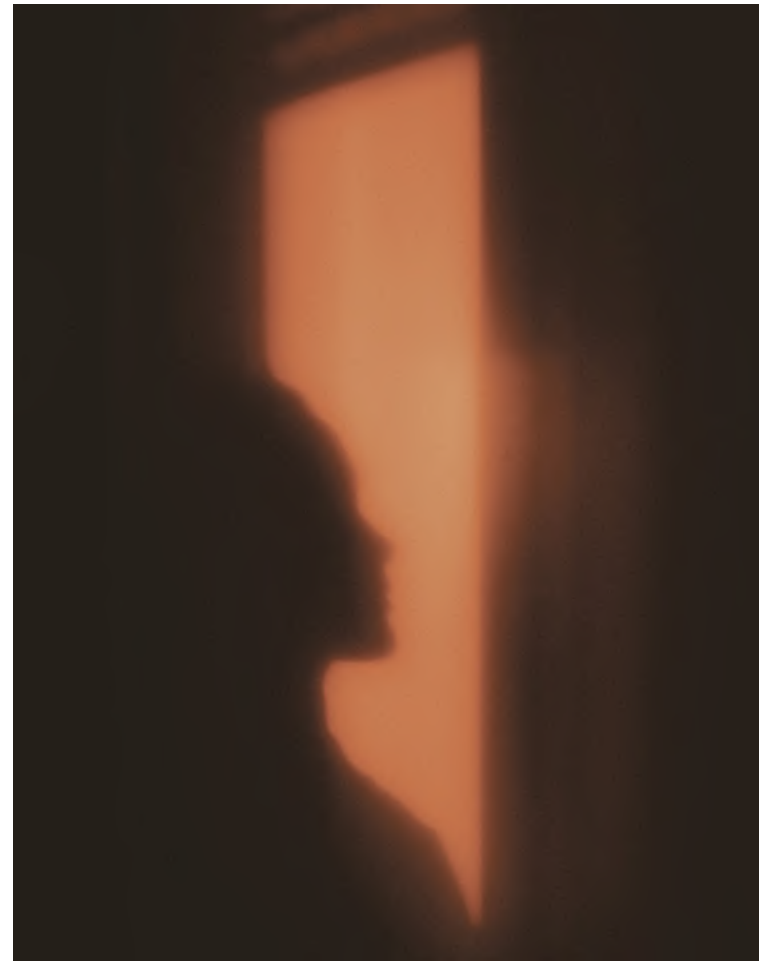
Empathy



Space renewal is not only inspiring, but has the ability to lift our spirits and improve our daily lives as well. Successful decoration will help us create safe, friendly and pleasant spaces that support our mental and physical well-being.



● Hint of Trust CM008



● I'm Listening CM006

The magical power of empathy inspires us to design spaces that make us feel calm and at peace.

Spaces that embrace diversity without discrimination, regardless of gender, sexual orientation and age. The color choices for decorating our home can influence this to a great extent. Some of the colors that have the ability to evoke feelings of empathy and warmth are orange, pink and blue. Orange, the cozy color of autumn, is a symbol of pleasure, spontaneity and positivity. It is often associated with spiritual practices, including meditation and compassion. It also appears in many of the most beautiful aspects of nature - it is the color of tropical sunrises and succulent fruits. Orange shades like **CM006 I'm Listening** allows for the creation of a space that encourages social interaction and friendly conversation.

COLOR
NAME

I'm Listening

CODE
CM006

COLOR
NAME

Our Truth

CODE
CM007

COLOR
NAME

Hint of Trust

CODE
CM008

COLOR
NAME

Feeling Pink

CODE
CM009

COLOR
NAME

Calming White

CODE
CM010



Inspiration



● Calming White CM010



● Feeling Pink CM009

To create a welcoming ambience and achieve balance in your space, combine orange with neutral colors such as white, gray and beige.

If you want to transform your room with contrast, try pairing it with a light blue, pink or yellow shade. In this way, you will bring vibrancy to your interior design, while maintaining the calm and relaxing atmosphere of the room. If you'd prefer a more subtle look, you could try using softer shades of orange such as salmon and coral. While these can be applied to any room in your home, they are ideal for the office as they encourage concentration and creativity. To add an earthy feel to your space, decorate it with natural wood furniture.



Design Trend



● Feeling Pink CM009

Empathetic design redefines accessibility for people with disabilities. It requires the creation of spaces that are easily accessible and inclusive. When we empathize with others, we can turn even the most stressful situations into pleasant ones.

We see this empathetic approach to design most often in personal spaces, it is equally important, however, to incorporate the same principles in public spaces. People don't just live at home. They 'live' at work too. Therefore, all public spaces should also require the application of empathetic design. To encourage empathetic design, you can incorporate natural elements such as organic shapes, plants and natural lighting into your space. You can also add household objects to soundproof the room such as curtains and rugs.

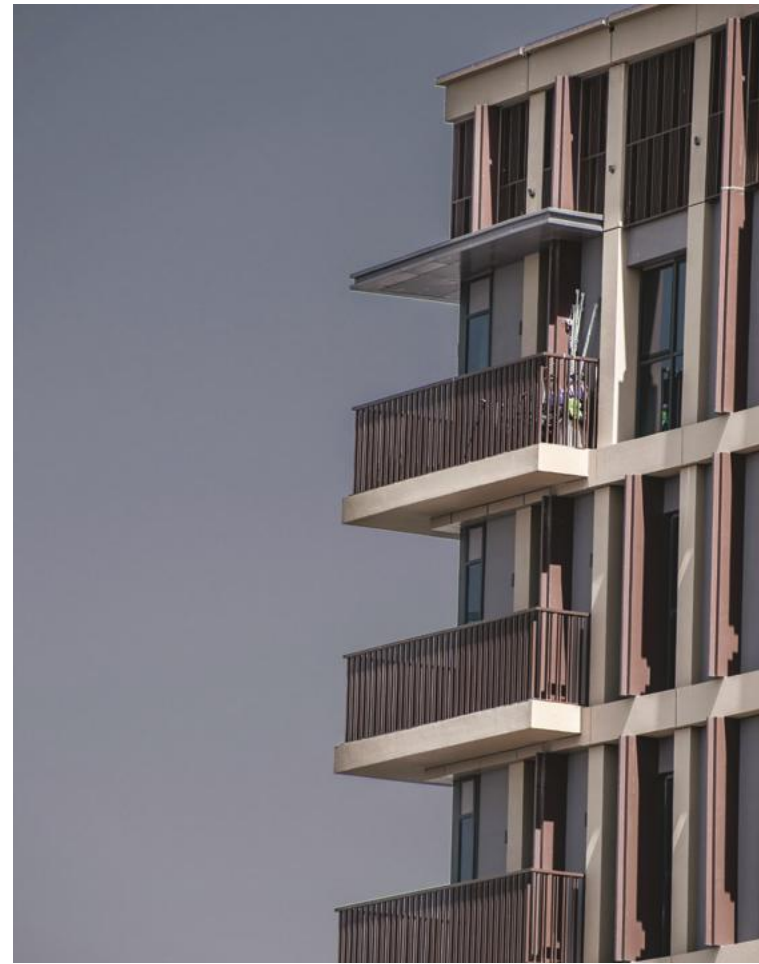
Calmness

After a hectic and stressful day, what we need when we get back home is to relax. One of the most important choices we have to make to achieve harmony and balance through decoration is - of course - colors.





● **Moody Me** CM014



● **Your Whispers** CM013

Blues and grays are perhaps the colors that soothe the soul more than any other.

Almost all of their shades have the ability to calm us down, and relieve us from the stress and fast pace of everyday life. This is because they reflect the vast ocean and endless skies. After all, most of us intuitively feel more relaxed and at peace when we look at the sea or the sky.

Whatever shades you choose to combine with blues and grays, it is certain that the final result will have a cooling and calming effect on the mind and body. And that's why they always find a way to come into our lives!

COLOR
NAME

Deep Eyes

CODE
CM011

COLOR
NAME

Cool Connection

CODE
CM012

COLOR
NAME

Your Whispers

CODE
CM013

COLOR
NAME

Moody Me

CODE
CM014

COLOR
NAME

Kisses xxx

CODE
CM015



Inspiration



● Deep Eyes CM011



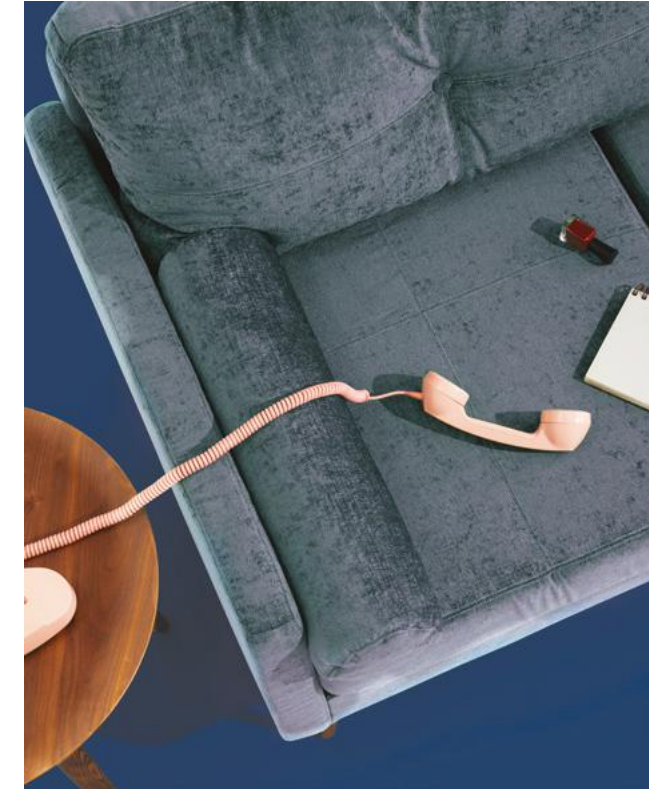
● Kisses XXX CM015

Blue is a unique color that can stand on its own, but it is also flexible and can be combined with many different colors, taking on a completely different character each time. Combined with warmer shades such as orange, blue creates a retro look and inspires confidence and freshness.

If you want to promote a calmer and more serene environment, blue should be paired together with cooler colors, such as vibrant green. If, on the other hand, you want to add depth and drama to your space, then a darker shade of blue like **CM012 Cool Connection** will do the trick. The combination of warm blue and gray will help create an open, airy feeling and encourage productivity and concentration, something ideal for study spaces. As such, it is an excellent choice if you want to create a zen home office. This is also a great option to decorate your home gym, as it will help you focus on your workout and keep the room feeling cool.



Design Trend



Cool Connection CM012

Decorating always requires flexibility, so it's important that each room can easily adapt to our changing needs.

Even in small apartments, the choice of color and material can bring a sense of spaciousness to a room. The living room can be transformed into a yoga area and the kitchen table into an informal office. Therefore, color choice is key to creating multipurpose spaces.

Feel



With the increasing incorporation of natural materials, shapes and earthy colors into our homes, as well as the harmony of artificial and natural lighting, it is clear that our common concern over climate and the environment predominates.



● Green Vibes CM017



● Feeling Complete CM018

As the climate crisis intensifies, adopting trends that reduce our carbon footprint is more important than ever. One of these trends is biophilic design, which promotes the integration of natural elements into our homes and workplaces.

Because of our obsession with technology and the isolation brought on by the pandemic, we have never needed nature's healing power more than we do today. Incorporating elements of nature into the design of our spaces can help bring the benefits of the great outdoors into our homes, making us happier and more optimistic. But even if you don't feel like adding houseplants to your home, green walls, furniture or a combination of both will turn any room into a calming space that recreates the benefits of spending time outdoors. Green is, among other things, a relaxing color that promotes balance and harmony. It is the color of spring, renewal and often symbolizes hope. When we choose the color green to dress our home, we have the need for a refuge away from the stress of modern life and to get in touch with mother nature. All these positive qualities of the color green further underline its importance in our lives and the need to protect our planet.

COLOR
NAME

Let's Connect

CODE
CM016

COLOR
NAME

Green Vibes

CODE
CM017

COLOR
NAME

Feeling Complete

CODE
CM018



Inspiration



● Feeling Complete CM018



● Let's Connect CM016

Calm and serene, green can be easily used in every room and you can choose from countless stunning shades.

If you're feeling bold, you can paint all the walls in a room with one singular color, for example **CM017 Green Vibes**. Alternatively, green is at its best when combined with neutral colors such as brown and gray, two ideal choices if you love timeless design. For a bright and cool effect, green can also be paired with warm colors such as orange and yellow. A few touches of gold, on the other hand, will add grandeur and elegance to a living room. The color combo of green and blue is also very striking. In this case, the addition of white or gray furniture and decor will help create a well-balanced and harmonious space.

Design Trend



● Feeling Complete CM018

Biophilic design promotes the reconnection of people with nature. It creates spaces that benefit us mentally, as it increases creativity, reduces stress, and improves our mood and overall well-being.

The incorporation of plants, green colors, natural light, water, and natural or minimally processed materials such as wood, stone, and marble into our interiors can improve our quality of life. Of course, the most common and essential element of biophilic design is plants, which can be placed in all areas of the home. Add a few mini cacti in the kitchen or a rosemary and basil plant for when you cook. Another extremely popular choice is to hang your favorite plants from a wall on your balcony or terrace, giving it a bohemian vibe. In fact, the plants you choose have the ability to reveal a lot about your personality. Low-maintenance cacti, for example, are ideal for those with a laid-back attitude, while orchids are for those who are more patient and are able to wait for the beautiful to bloom again.

Balance

In an increasingly urbanized and technologically-driven world, the desire to escape, even for a little while, from the screens that dominate our lives has never been stronger than today. The best start is to incorporate elements of nature into your home.





● Mind Games CM020



● Mellow Yellow CM021

Natural materials such as wooden furniture, bamboo, and ceramics will help you manage the stressful and oppressive atmosphere around you.

In addition to natural materials, the choice of colors that will decorate your space is very important. In recent years, due to the pandemic and the new work-from-home culture, we want to feel a sense of security and safety in our personal space. Brown is a color often associated with security, balance, warmth, and stability, much like the earth. It is the element that keeps us literally grounded. Another factor that contributes to the attractiveness of brown is the fact that it imbues minimalist design into a space due to its neutrality. It elicits a sense of tranquility and is always on-trend due to its timelessness. In combination with natural materials, furniture and accessories in earthy brown shades, as well as indoor plants, you will manage to invigorate any dusty old corner of your home! If you want to break the monotony and brighten up your space, you can incorporate vibrant and bold colors like **CM021 Mellow Yellow**. When brown pairs with yellow, it makes any room instantly feel more cozy, inviting and comfortable.

COLOR
NAME

Perfect Balance

CODE
CM019COLOR
NAME

Mind Games

CODE
CM020COLOR
NAME

Mellow Yellow

CODE
CM021



Inspiration



● Perfect Balance CM019



● Mind Games CM020

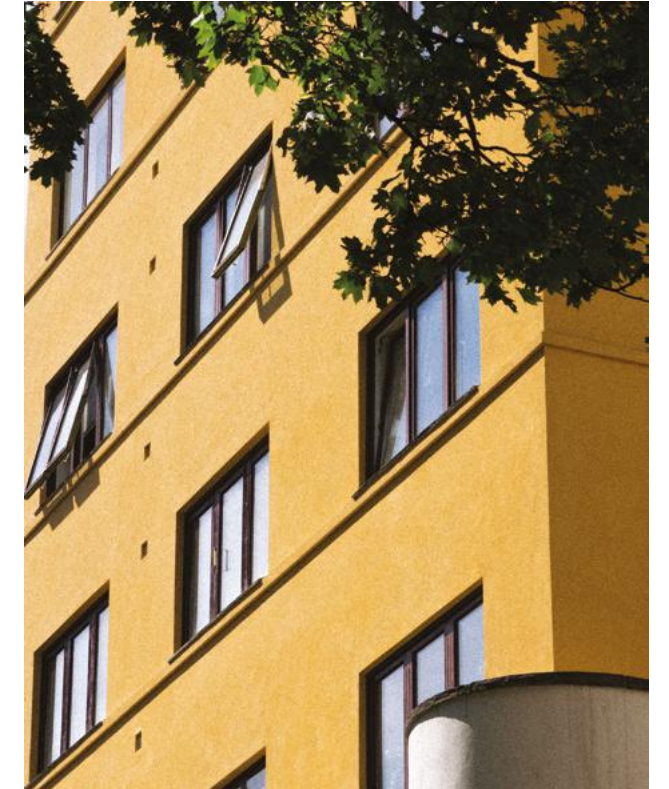
Apart from a classic earthy color, brown is also extremely versatile. With a wide range of shades, it offers a plethora of options for creating anything from calm and airy to elegant spaces with a dramatic character.

Brown shades are ideal for decorating your living room, as they instantly make a room look warm and all furniture and accessories stand out boldly. Dark shades of brown, such as **CM019 Perfect Balance**, make a statement, emitting warmth and creating welcoming and friendly spaces. Dark brown can be combined perfectly with petrol and mustard yellow if you want your space to grab attention, exude sophistication and style. Brown naturally goes well with other earth tones such as terracotta and beige. Alternatively, pair it with plenty of

white for a very classic and timeless color combination that exudes luxury. In this case, incorporating brown furniture and accessories is an excellent way to adopt the Scandinavian style and give your home a cohesive look. If you'd rather embrace the trendy vintage home decor trend, try finding brown antique furniture for your space.



Design Trend



● Mellow Yellow CM021

Interior design trends now require the harmonization of the interior with the exterior environment. The easiest way to achieve this is by incorporating natural and durable materials into our homes.

For example, you can invest in beautiful pieces of wood, macrame wall hangings, woven baskets, linen cushion covers, and jute rugs. Incorporating elements of nature through the use of sustainable materials helps us get back to our primal state, balancing our mental health and adding beauty in our daily life. They also contribute to promoting healthy lifestyles, as they are more breathable and improve air quality. Additionally, natural elements respect the environment, bringing us one step closer to fighting climate change.

Sense

In a world where we are constantly overstimulated, enhancing our 5 basic senses through decoration is very beneficial for our mental wellbeing. Do you want to have a more holistic approach to design and include sensory elements into your home?





● Embracing White CM022



● Playful Kiss CM024

Then don't just think about what you like to look at, but also what you like to touch, smell, and taste. Using all your senses, you will be able to create a holistic experience and make more informed decisions about decorating your home.

To begin with, in order to appeal to the visual sense of sight, you must consider how mood can be favorably influenced by the color you choose to paint the walls of a room. Green, for example, increases productivity and evokes positive feelings. It has a calming effect on the nervous system and can diffuse anxiety. Blue-purple shades such as **CM024 Playful Kiss** evoke similar emotions to green. You can add both of these colors in gathering spaces like the kitchen, promoting warmth and hospitality. To further enhance the effect of green and purple, you can make a lime and rosemary air freshener or use dried lavender to decorate your kitchen. Pleasantly fragancing an interior can trigger powerful and emotional childhood memories.

COLOR
NAME

Embracing White

CODE
CM022

COLOR
NAME

Hold Me

CODE
CM023

COLOR
NAME

Playful Kiss

CODE
CM024

Inspiration



● Playful Kiss CM024



● Hold Me CM023

Green, if used correctly, can be the ideal shade to breathe new life into your kitchen. It fits almost every kitchen style, whether it's modern, traditional, or rustic.

You can paint the ceiling of the room green and combine it with white cabinets. Alternatively, paint the kitchen cabinets green and add wooden decorative items to the space. To bring a sense of luxury and sophistication to the kitchen, green pairs perfectly with gold details, such as gold faucets, gold handles, and even gold cabinet hinges. Purple, on the other hand, will add personality to both small and large kitchens. It goes very well with gray and cream, as well as natural elements such as wood and indoor plants. If you don't feel bold enough yet, you can start by just painting your kitchen island.



Design Trend



● Hold Me CM023 ● Playful Kiss CM024

The decoration of a space is not limited to its appearance, but includes anything that a person can perceive, such as textures, scents, and sounds. Based on this, sensorial design can transform the interaction between people and the built environment into something even more essential.

A space that takes into account all the senses can evoke feelings such as warmth, coziness, and comfort. Initially, lighting highlights the first things we perceive when entering a space - its feel. For this reason, good lighting design is the key to improving our mood and energy levels. The surfaces of floors, walls, and furniture are also elements that people can understand using the sense of touch. Using items with soft textures, such as blankets, carpets, and pillows, is an easy way to calm anxious thoughts. Additionally, sound is part of the home's identity, although it is significantly influenced by external factors such as noise pollution. In fact, the sense of hearing is considered the most important of the senses, as it helps us understand the scale and proportion of a space. Besides acoustic and soundproofing techniques, you can incorporate sounds that promote tranquility into your home such as wind chimes and soft music.

Surface Coatings

We have created for you a range of high-quality products, designed for the needs of indoors and outdoors surfaces. Discover our products.

Interior Surface



MASTER
Superior Quality
Finish: Matt
In thousands of shades



MASTER EASY CLEAN
High washability
Finish: Semi Matt
In thousands of shades



MASTER ECO
Ecological
Finish: Matt
In thousands of shades



MASTER HYDROCONTROL
For Kitchen & Bathrooms
Finish: Ultra Matt
In thousands of shades



ASEPSIS
Antimicrobial
Finish: Velvet Matt
In thousands of shades



MASTER CLEAN AIR
Photocatalytic Properties
Finish: Matt

Exterior Surface



4 SEASONS
Acrylic
Finish: Matt
In thousands of shades



4 SEASONS ELASTIC
Elastomeric
Finish: Matt
In thousands of shades



4 SEASONS WATERPROOF
Silicone Based
Finish: Matt
In thousands of shades

Primers, Substrates, Stuccos



DUR
Acrylic transparent
solvent-borne primer



ECO DUR AQUA
Ecological waterbased
100% acrylic primer



HAFT
Waterbased acrylic primer



ECO STAIN BLOCKER AQUA
Ecological acrylic
stain blocking primer



MULTI PRIMER
Acrylic water based primer
for various surfaces



PUTTY
Elastomeric acrylic putty

Wood



WOOD AQUA
Ecological polyurethane acrylic enamel paint
Finishes: Gloss / Satin / Matt
In thousands of shades



WOOD SHIELD
Waterborne polyurethane
acrylic wood-stain varnish
UP TO 7 YEARS PROTECTION



WOOD SHIELD COLOR BASED
Biobased wood stain
polyurethane varnish
UP TO 7 YEARS PROTECTION

Metal



HARD DUKO CLASSIC
Acrylic modified enamel paint
Finish: Gloss / Satin
In thousands of shades



METAL 3in1 CLASSIC
Anticorrosive paint
Finish: Gloss



HARD & GLOSS
High-quality solvent-borne
enamel paint
Finish: Gloss



TALK TO ME IN COLOR

Scan the QR code and watch
our new campaign.



kraftpaints.com



ΚΑΙΝΟΤΟΜΙΑ ΠΟΥ ΔΙΝΕΙ ΑΞΙΑ



kraftpaints.com

800 111 7700

Free of charge from landlines
Monday - Friday **08:00 - 16:00**

210 5519 500

From mobile phones
Monday - Friday **09:00 - 17:00**

DRUCKFARBEN
DT GROUP

DRUCKFARBEN HELLAS S.A

Megaridos Avenue, Kallistiri Area, 19300,
Aspropyrgos, Attica, Greece

info@kraftpaints.com

www.druckfarbengroup.com